



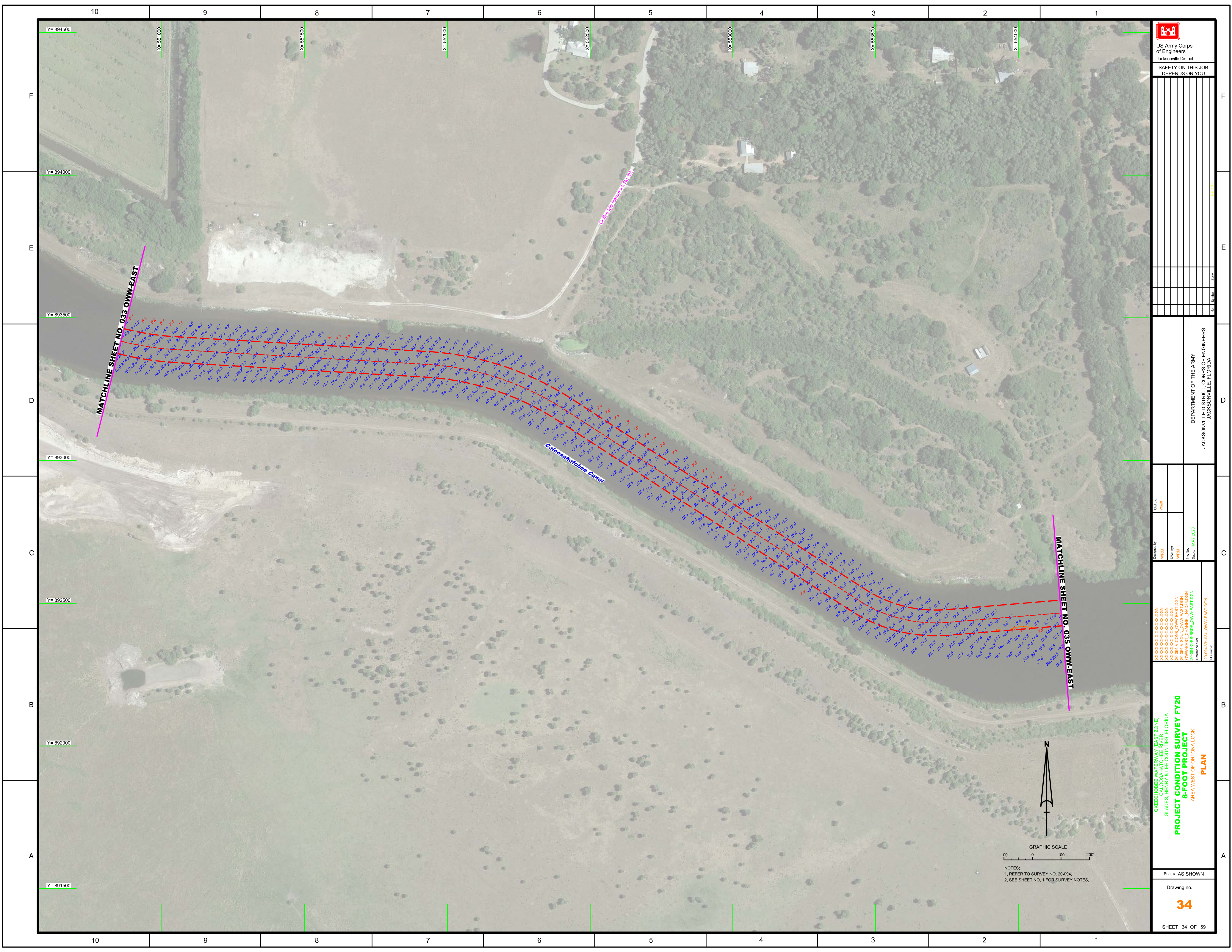



 US Army Corps of Engineers Jacksonville District SAFETY ON THIS JOB DEPENDS ON YOU	
Drawn by: _____ Checked by: _____ Date: _____	Designated by: _____ Design Date: _____ Date: _____
<b>DEPARTMENT OF THE ARMY</b> <b>JACKSONVILLE DISTRICT, CORPS OF ENGINEERS</b> JACKSONVILLE, FLORIDA	
<b>PROJECT CONDITION SURVEY FY20</b> <b>8-FOOT PROJECT</b> AREA EAST AND SOUTH OF CYPRESS BRANCH	
<b>PLAN</b>	
Scale: AS SHOWN Drawing no. <b>32</b> SHEET 32 OF 59	

OKEECHOBEE WATERWAY (EAST ZONE)  
 CALOOSAHATCHEE RIVER  
 GLADES, HENRY & LEE COUNTIES, FLORIDA  
**PROJECT CONDITION SURVEY FY20**  
**8-FOOT PROJECT**  
 AREA EAST AND SOUTH OF CYPRESS BRANCH  
**PLAN**

NORTH  
 N  
 GRAPHIC SCALE  
 100' 0 100' 200'  
 NOTES:  
 1. REFER TO SURVEY NO. 20-094.  
 2. SEE SHEET NO. 1 FOR SURVEY NOTES.





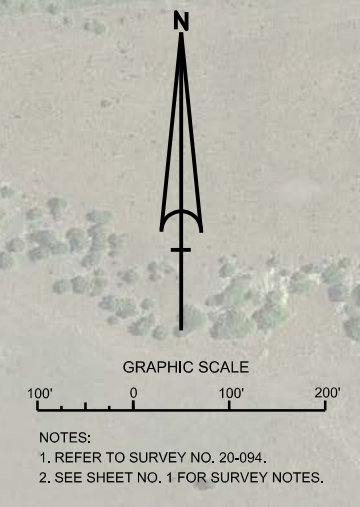

  
 US Army Corps of Engineers  
 Jacksonville District  
 SAFETY ON THIS JOB  
 DEPENDS ON YOU

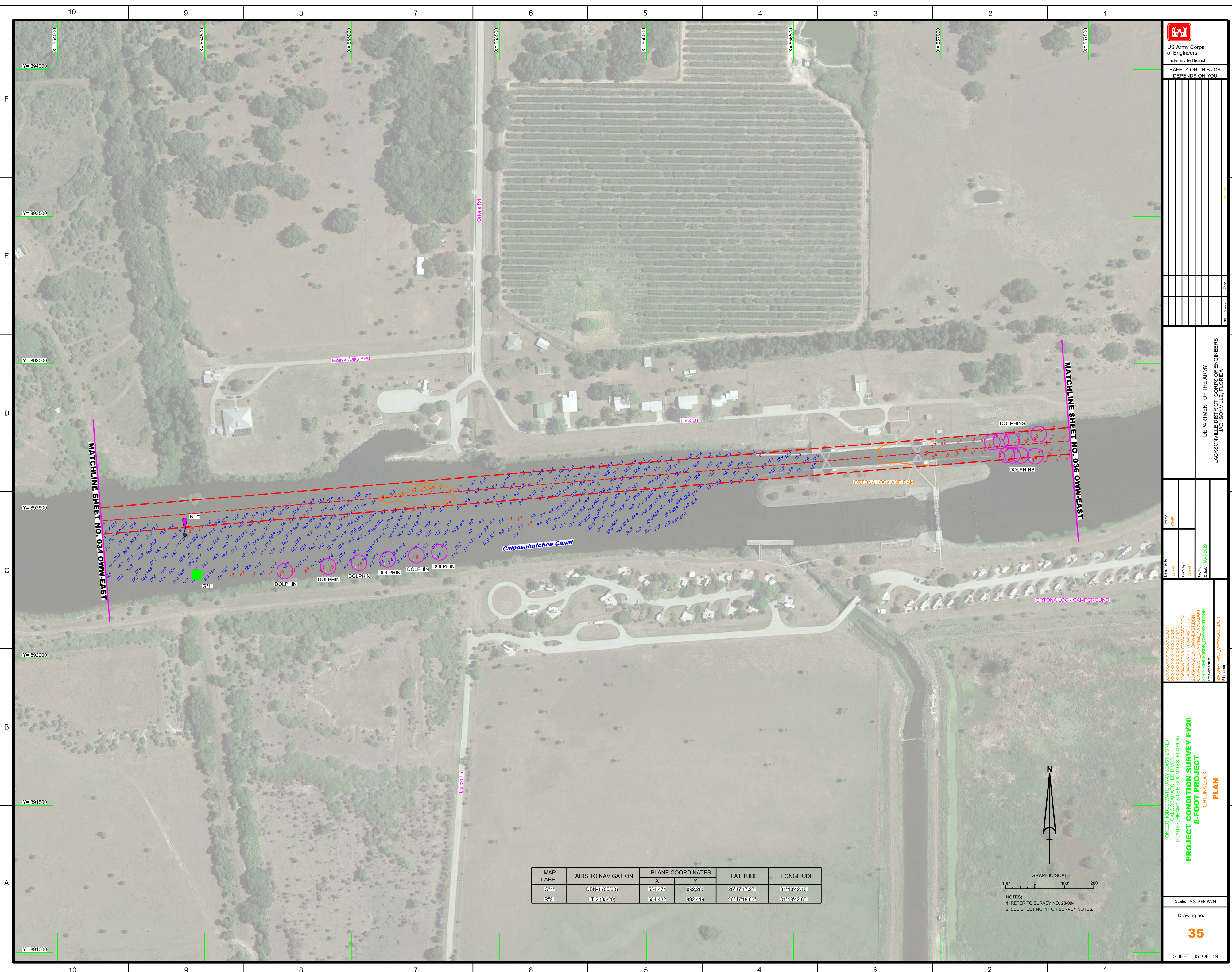
DEPARTMENT OF THE ARMY  
 JACKSONVILLE DISTRICT, CORPS OF ENGINEERS  
 JACKSONVILLE, FLORIDA

Designed by: WRM  
 Drawn by: WRM  
 Checked: MAY 2020  
 File Name: 20-094-HR34\_OWWEAST.DGN  
 Project Name: 20-094-HR34\_OWWEAST.DGN

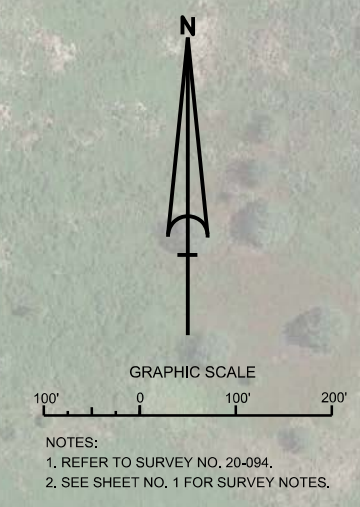
OKEECHOBEE WATERWAY (EAST ZONE)  
 CALOOSAHATCHEE RIVER, FLORIDA  
 GLADES, HENRY & LEE COUNTIES, FLORIDA  
**PROJECT CONDITION SURVEY FY20**  
**8-FOOT PROJECT**  
 AREA WEST OF ORTONA LOCK  
**PLAN**

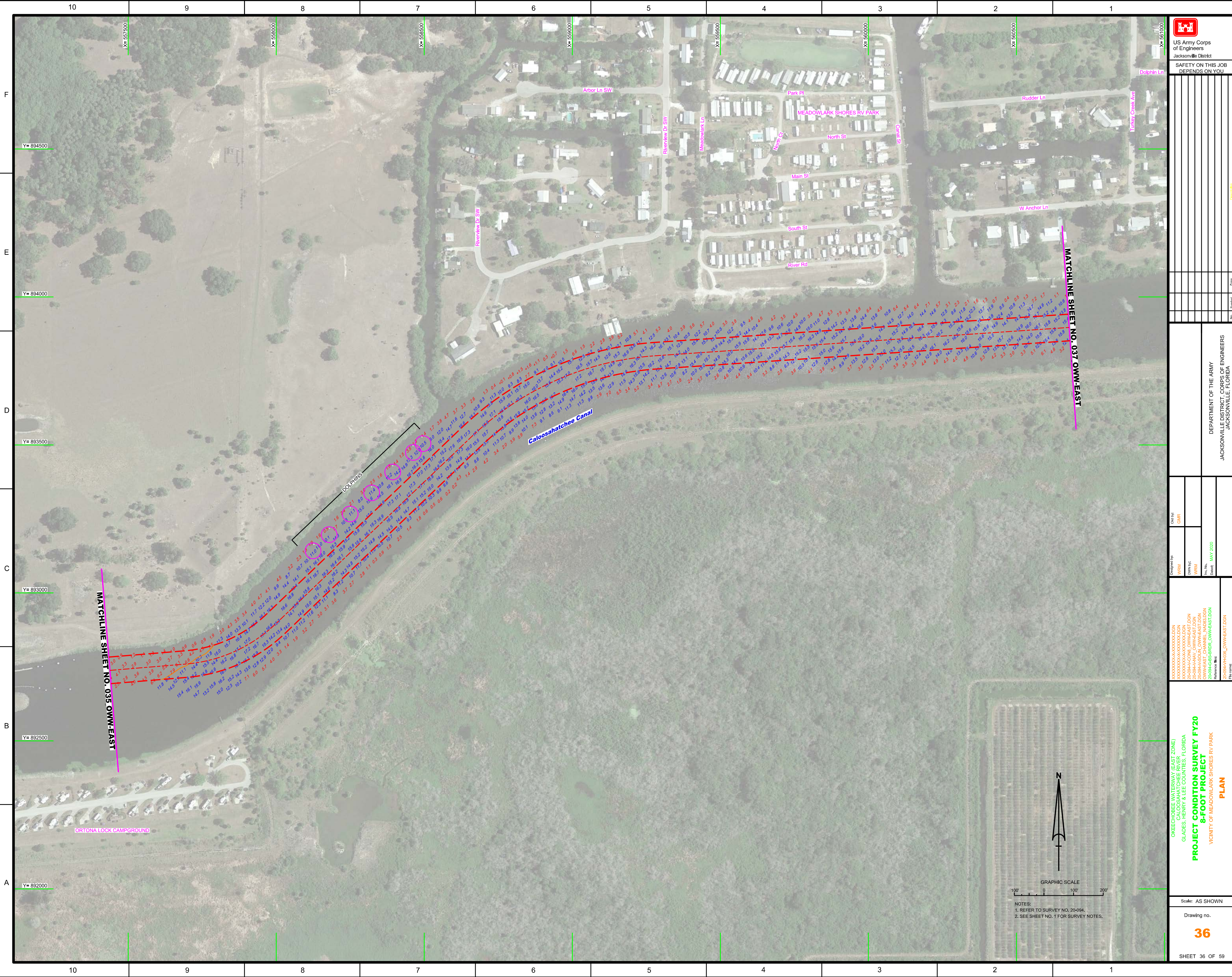
Scale: AS SHOWN  
 Drawing no.  
**34**  
 SHEET 34 OF 59






MAP LABEL	AIDS TO NAVIGATION	PLANE COORDINATES		LATITUDE	LONGITUDE
		X	Y		
G*1*	DBN-1 (05/20)	554,474	892,282	26°47'17.27"	81°18'42.18"
R*2*	LT-2 (05/20)	554,432	892,419	26°47'18.63"	81°18'42.65"







US Army Corps of Engineers  
Jacksonville District  
SAFETY ON THIS JOB DEPENDS ON YOU

--	--	--	--	--	--	--	--	--

--	--	--	--	--	--	--	--	--

**DEPARTMENT OF THE ARMY**  
JACKSONVILLE DISTRICT, CORPS OF ENGINEERS  
JACKSONVILLE, FLORIDA

<p style="font-size: small;">Designed by: <b>WRM</b> Drawn by: <b>WRM</b> Checked: <b>MAY 2020</b></p>	<p style="font-size: small;">Credited by: <b>GMR</b> Drawn by: <b>WRM</b> Checked: <b>MAY 2020</b></p>
--	--

XXXXXXXXXXXXXXXXXXXXX.DGN  
XXXXXXXXXXXXXXXXXXXXX.DGN  
XXXXXXXXXXXXXXXXXXXXX.DGN  
XXXXXXXXXXXXXXXXXXXXX.DGN  
XXXXXXXXXXXXXXXXXXXXX.DGN  
XXXXXXXXXXXXXXXXXXXXX.DGN  
XXXXXXXXXXXXXXXXXXXXX.DGN  
XXXXXXXXXXXXXXXXXXXXX.DGN

**OKEECHOBEE WATERWAY (EAST ZONE)**  
**CALOOSAHATCHEE RIVER, FLORIDA**  
**GLADES, HENRY & LEE COUNTIES, FLORIDA**  
**PROJECT CONDITION SURVEY FY20**  
**8-FOOT PROJECT**  
**VICINITY OF MEADOWLARK SHORES RV PARK**

**PLAN**

Scale: AS SHOWN

Drawing no.  
**36**

SHEET 36 OF 59

GRAPHIC SCALE  
100' 0 100' 200'

NOTES:  
1. REFER TO SURVEY NO. 20-094.  
2. SEE SHEET NO. 1 FOR SURVEY NOTES.









US Army Corps of Engineers  
Jacksonville District

SAFETY ON THIS JOB  
DEPENDS ON YOU

U.S. Symbol	Zone

DEPARTMENT OF THE ARMY  
JACKSONVILLE DISTRICT, CORPS OF ENGINEERS  
JACKSONVILLE, FLORIDA

Checked by: GHR  
Designed by: WRM  
Drawn by: WRM  
In File: MAY 2020  
Checked: MAY 2020

XXXXXXXXXXXXXXXXXXXX.DGN  
XXXXXXXXXXXXXXXXXXXX.DGN  
XXXXXXXXXXXXXXXXXXXX.DGN  
XXXXXXXXXXXXXXXXXXXX.DGN  
XXXXXXXXXXXXXXXXXXXX.DGN  
XXXXXXXXXXXXXXXXXXXX.DGN  
XXXXXXXXXXXXXXXXXXXX.DGN  
XXXXXXXXXXXXXXXXXXXX.DGN  
XXXXXXXXXXXXXXXXXXXX.DGN  
XXXXXXXXXXXXXXXXXXXX.DGN  
XXXXXXXXXXXXXXXXXXXX.DGN

OKEECHOBEE WATERWAY (EAST ZONE)  
CALOOSAHATCHEE RIVER, FLORIDA  
GLADES, HENRY & LEE COUNTIES, FLORIDA  
**PROJECT CONDITION SURVEY FY20**  
**8-FOOT PROJECT**  
AREA NORTH OF LONG HAMMOCK  
**PLAN**

Scale: AS SHOWN

Drawing no.

**39**

SHEET 39 OF 59

GRAPHIC SCALE  
0 100' 200'

NOTES:  
1. REFER TO SURVEY NO. 20-094.  
2. SEE SHEET NO. 1 FOR SURVEY NOTES.

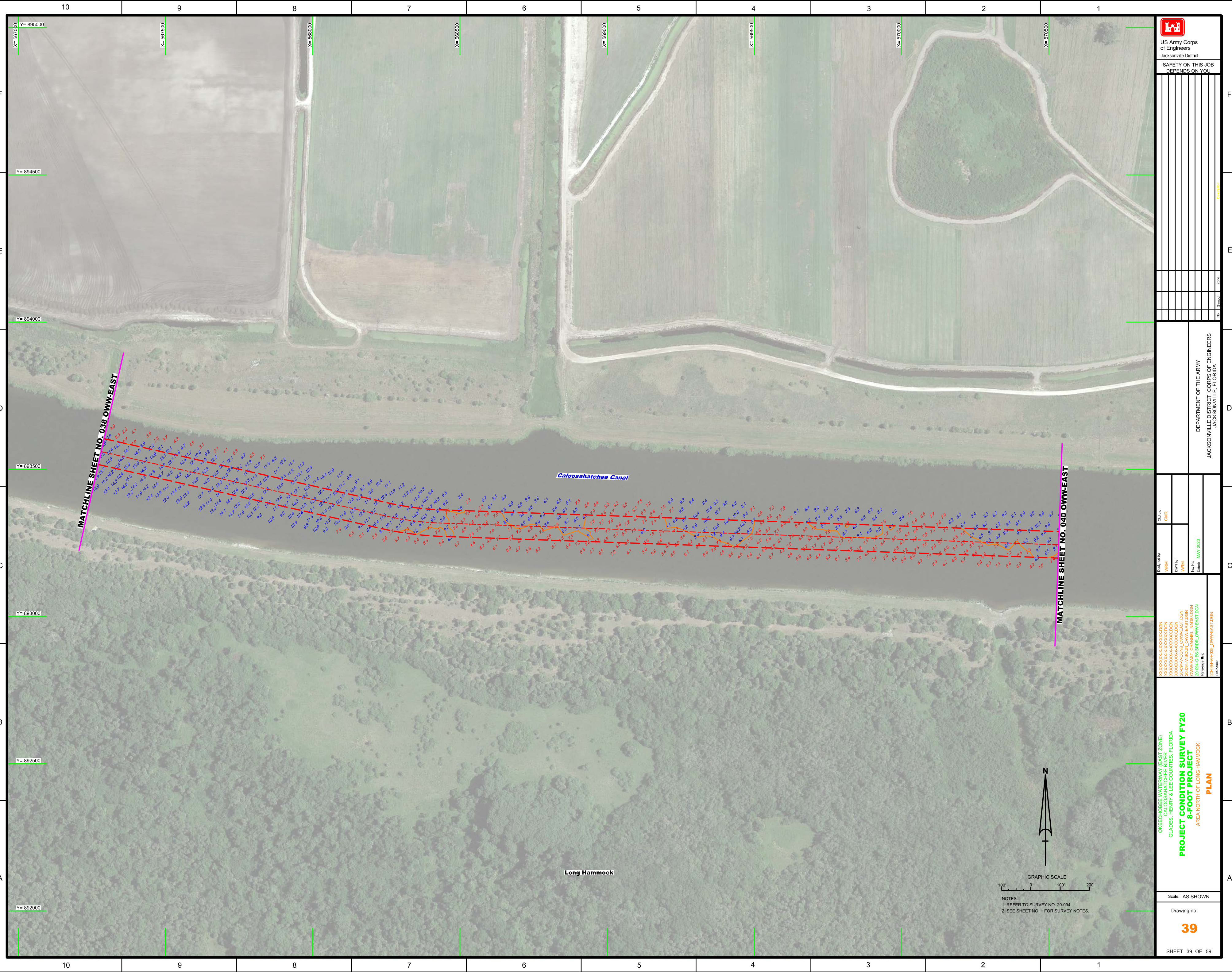


Long Hammock

Caloosahatchee Canal

MATCHLINE SHEET NO. 038 OWW-EAST

MATCHLINE SHEET NO. 040 OWW-EAST



10 9 8 7 6 5 4 3 2 1

10 9 8 7 6 5 4 3 2 1

F

E

D

C

B

A

F

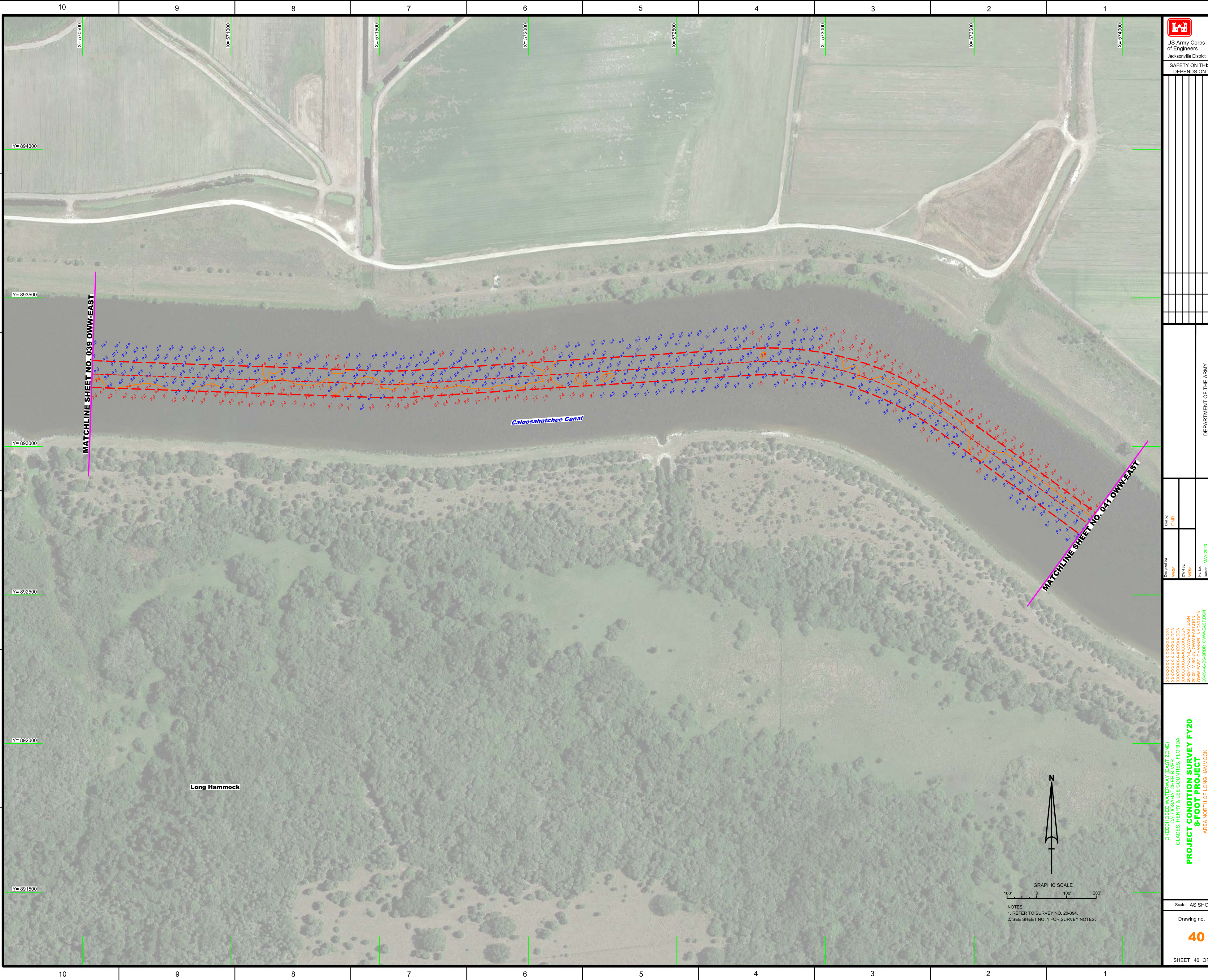
M

D

C

B

A



US Army Corps  
of Engineers  
Jacksonville District  
SAFETY ON THIS JOB  
DEPENDS ON YOU

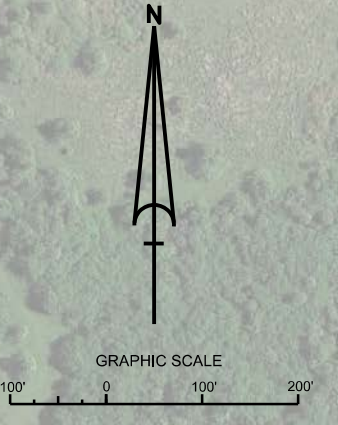

DEPARTMENT OF THE ARMY  
JACKSONVILLE DISTRICT, CORPS OF ENGINEERS  
JACKSONVILLE, FLORIDA

Checked by: **GHR**  
Designed by: **WRM**  
DWG No: **WRM**  
File No: **WRM**  
Date: **MAY 2020**

XXXXXXXXXXXXXXXXXXXX.DGN  
XXXXXXXXXXXXXXXXXXXX.DGN  
XXXXXXXXXXXXXXXXXXXX.DGN  
XXXXXXXXXXXXXXXXXXXX.DGN  
XXXXXXXXXXXXXXXXXXXX.DGN  
XXXXXXXXXXXXXXXXXXXX.DGN  
XXXXXXXXXXXXXXXXXXXX.DGN  
XXXXXXXXXXXXXXXXXXXX.DGN  
XXXXXXXXXXXXXXXXXXXX.DGN  
XXXXXXXXXXXXXXXXXXXX.DGN

**PROJECT CONDITION SURVEY FY20**  
**8-FOOT PROJECT**  
AREA NORTH OF LONG HAMMOCK  
**PLAN**

Scale: AS SHOWN  
Drawing no.  
**40**  
SHEET 40 OF 59



NOTES:  
1. REFER TO SURVEY NO. 20-094.  
2. SEE SHEET NO. 1 FOR SURVEY NOTES.

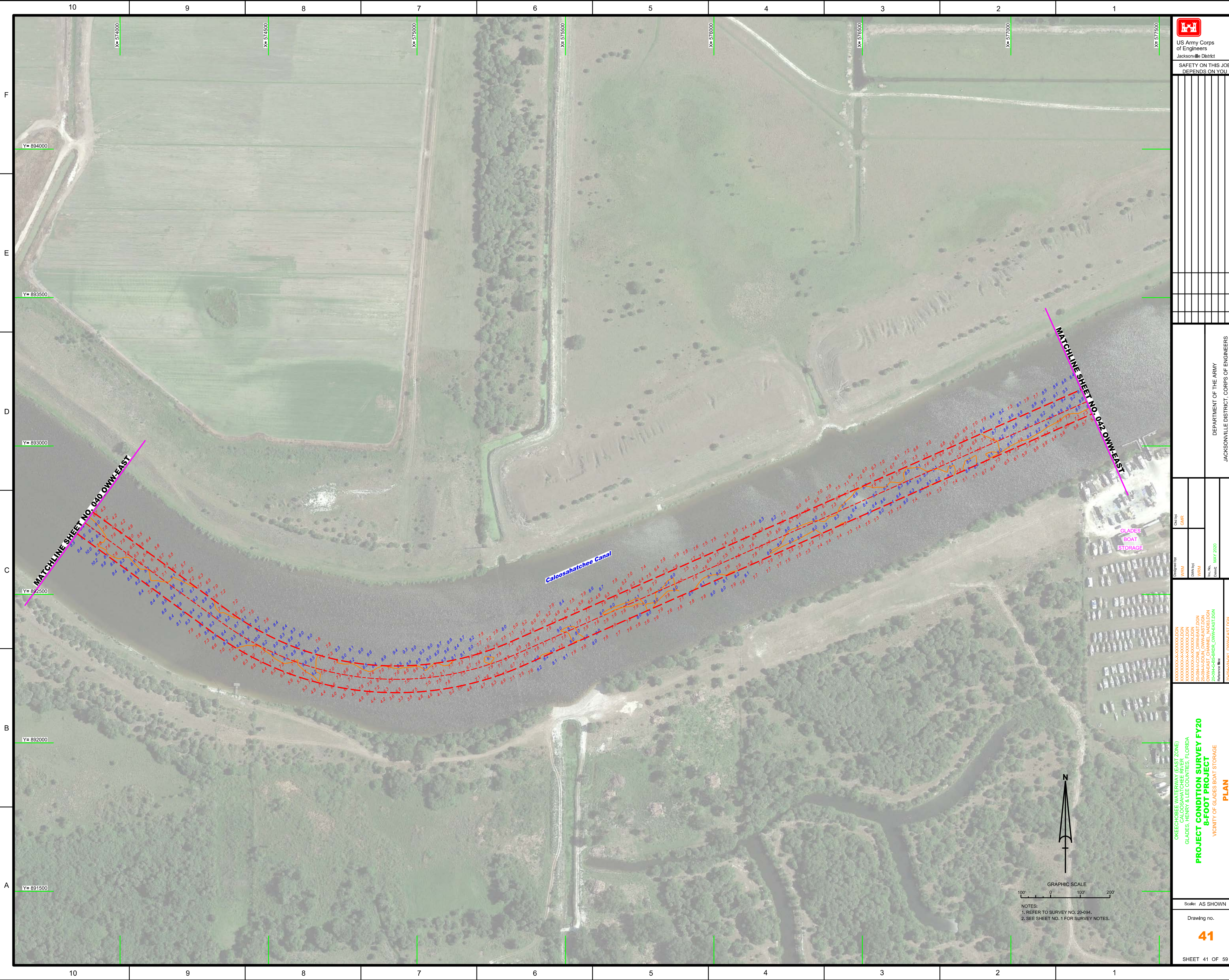
MATCHLINE SHEET NO. 039 OWM-EAST

MATCHLINE SHEET NO. 041 OWM-EAST

Caloosahatchee Canal

Long Hammock

Grid labels: 10, 9, 8, 7, 6, 5, 4, 3, 2, 1 (Eastings)  
A, B, C, D, E, F (Northings)




DEPARTMENT OF THE ARMY  
 JACKSONVILLE DISTRICT, CORPS OF ENGINEERS  
 JACKSONVILLE, FLORIDA

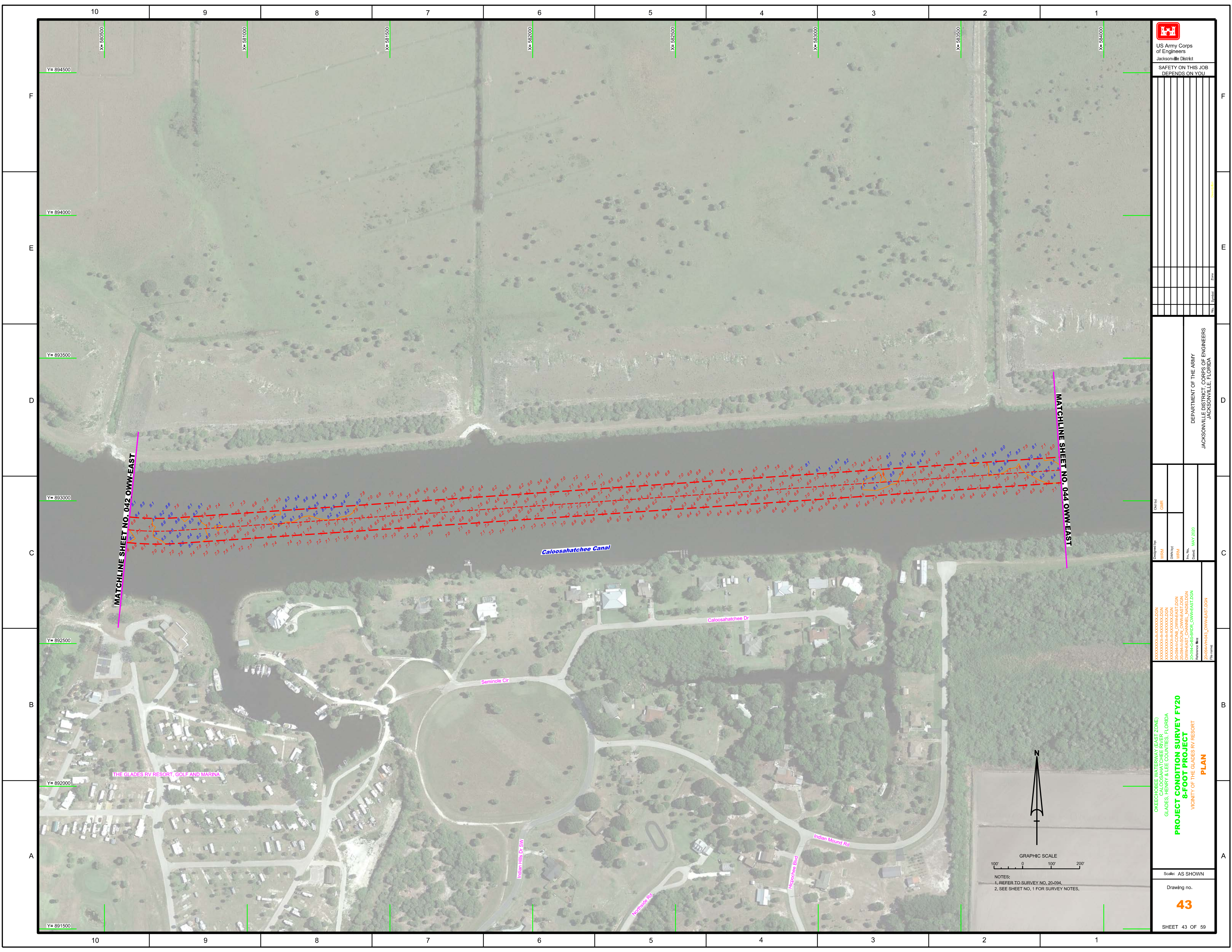
Designated by: **GHR**  
 Drawn by: **WRM**  
 Check by: **WRM**  
 Date: **MAY 2020**

\XXXXXXXXXXXXXXXXXXXX.DGN  
 \XXXXXXXXXXXXXXXXXXXX.DGN  
 \XXXXXXXXXXXXXXXXXXXX.DGN  
 \XXXXXXXXXXXXXXXXXXXX.DGN  
 \XXXXXXXXXXXXXXXXXXXX.DGN  
 \XXXXXXXXXXXXXXXXXXXX.DGN  
 \XXXXXXXXXXXXXXXXXXXX.DGN  
 \XXXXXXXXXXXXXXXXXXXX.DGN

OKEECHOBEE WATERWAY (EAST ZONE)  
 CALOOSAHATCHEE RIVER, FLORIDA  
 GLADES, HENRY & LEE COUNTIES, FLORIDA  
**PROJECT CONDITION SURVEY FY20**  
**8-FOOT PROJECT**  
 VICINITY OF GLADES BOAT STORAGE  
**PLAN**

GRAPHIC SCALE  
 100' 0 100' 200'  
 NOTES:  
 1. REFER TO SURVEY NO. 20-094.  
 2. SEE SHEET NO. 1 FOR SURVEY NOTES.





<p>US Army Corps of Engineers Jacksonville District</p>	
<p>SAFETY ON THIS JOB DEPENDS ON YOU</p>	
<p>Drawn by: _____</p>	<p>Checked by: _____</p>
<p>Designed by: _____</p>	<p>Reviewed by: _____</p>
<p>Project No: _____</p>	<p>Date: _____</p>
<p>Client: _____</p>	<p>Scale: _____</p>
<p>Project Name: _____</p>	<p>Sheet No: _____</p>
<p>Project Location: _____</p>	<p>Scale: AS SHOWN</p>
<p>Project Description: _____</p>	<p>Drawing No. <b>43</b></p>
<p>Project Manager: _____</p>	<p>SHEET 43 OF 59</p>

OKEECHOBEE WATERWAY (EAST ZONE)  
CALOOSAHATCHEE RIVER  
GLADES, HENRY & LEE COUNTIES, FLORIDA  
**PROJECT CONDITION SURVEY FY20**  
**8-FOOT PROJECT**  
VICINITY OF THE GLADES RV RESORT  
**PLAN**

GRAPHIC SCALE  
100' 0 100' 200'

NOTES:  
1. REFER TO SURVEY NO. 20-094.  
2. SEE SHEET NO. 1 FOR SURVEY NOTES.



